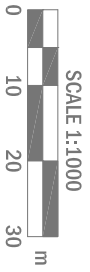


LINDALE PARK



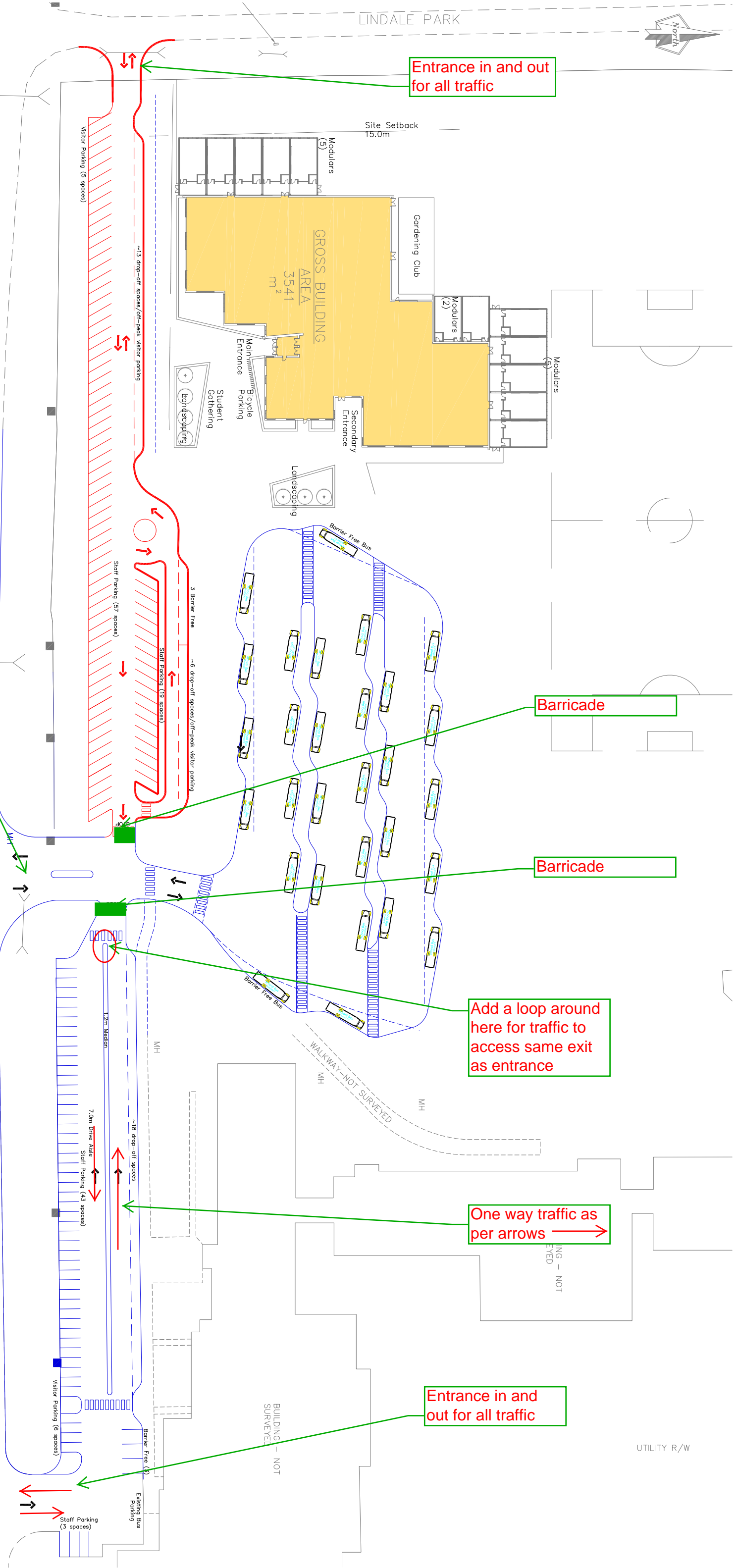
DRAFT

PROJECT 3335.03 - Ardrossan Elementary School
 SHEET NO. 9
 DATE July 2, 2015

**Ardrossan Elementary School On-site Circulation
 Option 6C - with turnaround**

SUMMARY - OPTION 6C

	Existing	Option 6B
School Buses	28 spaces	30 spaces
Drop-off/Pick-up	0 spaces	42 spaces
Staff/EIPs Parking	121 spaces	126 spaces
Visitor Parking	9 spaces	11 spaces
Barrier Free Parking	6 spaces	6 spaces



Entrance in and out for all traffic

Barricade

Barricade

Add a loop around here for traffic to access same exit as entrance

One way traffic as per arrows

Entrance in and out for all traffic