



Where young minds shine!

Mission

To help each child be a successful and self-motivated learner in a safe and caring school and an empowered and effective lifelong learner in a changing world.

Current Facility Information

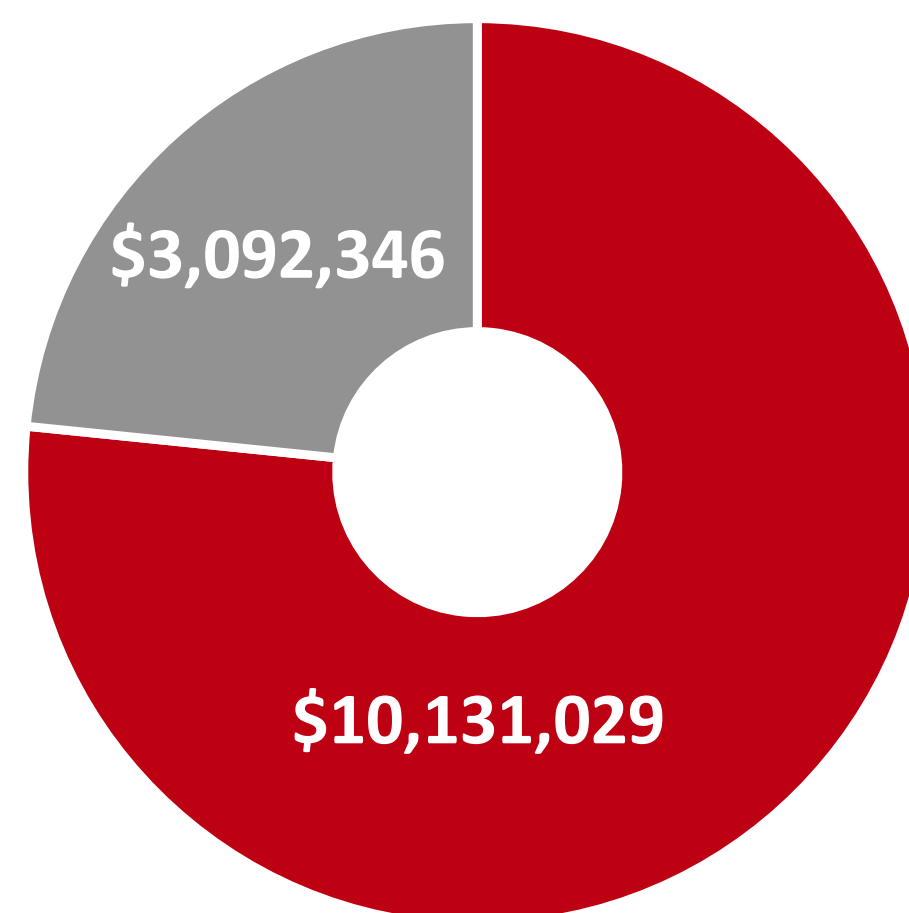
Built in 1954
Gross: 3,756.80 m2
9 modulars aging from 1977-2015
Capacity: 507
2016-2017 Utilization Rate 83%

On March 21, 2017 the Government of Alberta announced funding approval for a replacement school.

New Facility Information

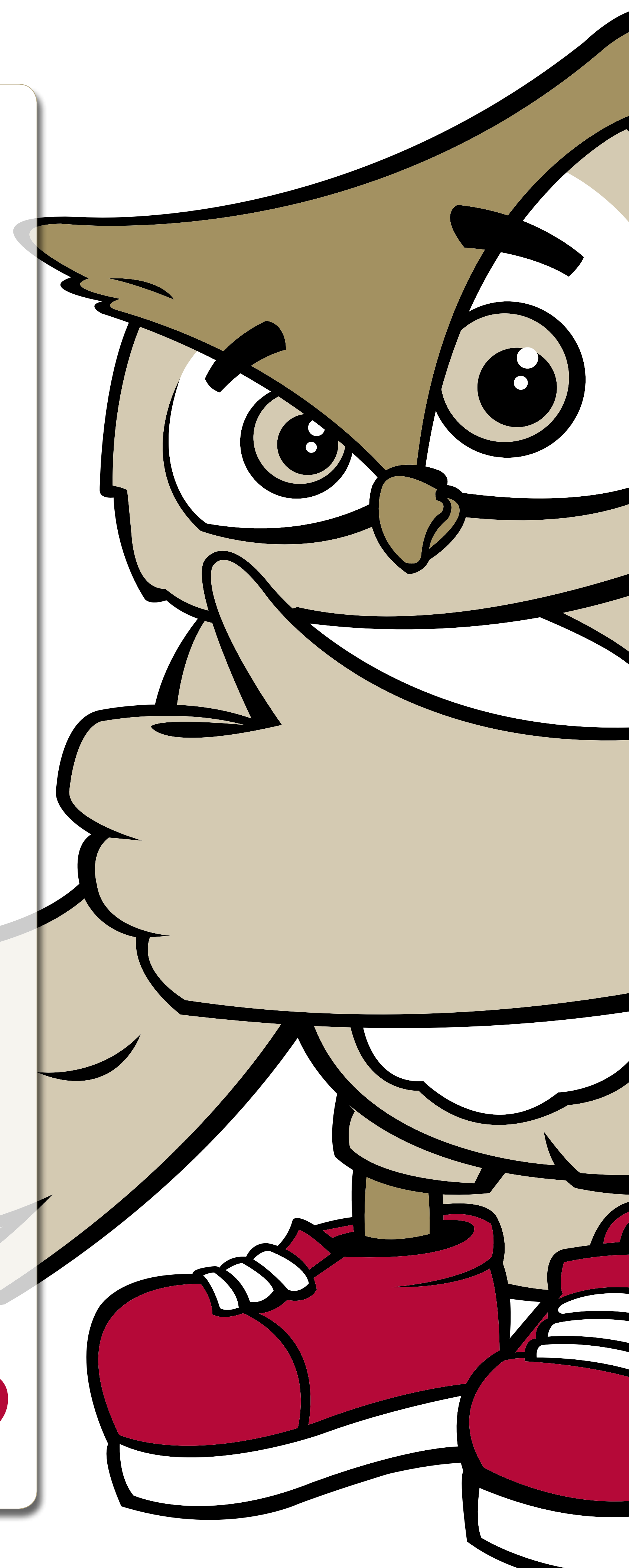
Type: Replacement School
Grade Configuration: K-6
Capacity: 650
Location: Heritage Hills
Approved Budget
Building Construction \$14,522,323

WYE ELEMENTARY REPLACEMENT VALUES



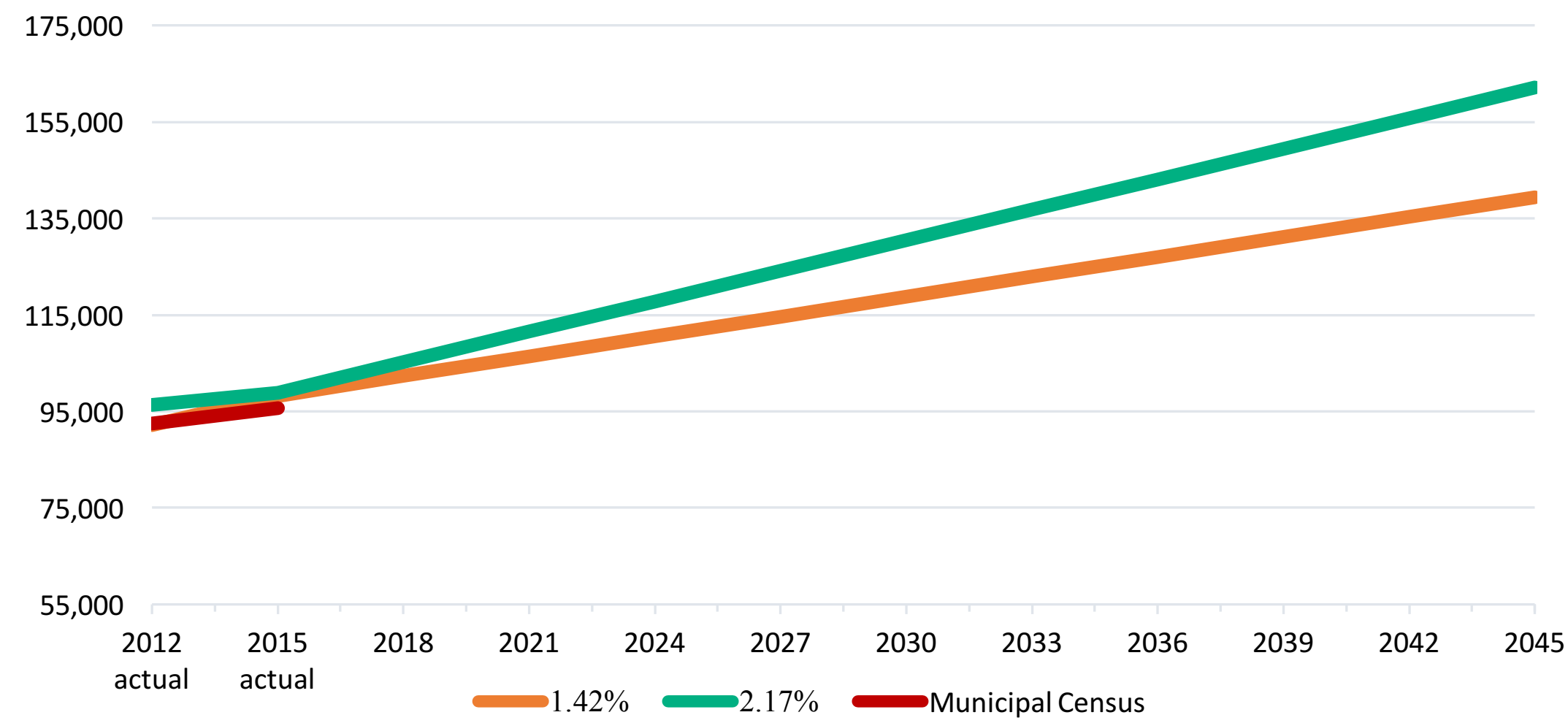
■ Building ■ Modulars

“It’s great news for our Division, our school community and especially our students.”
— Trina Boymook, Board Chair, EIPS

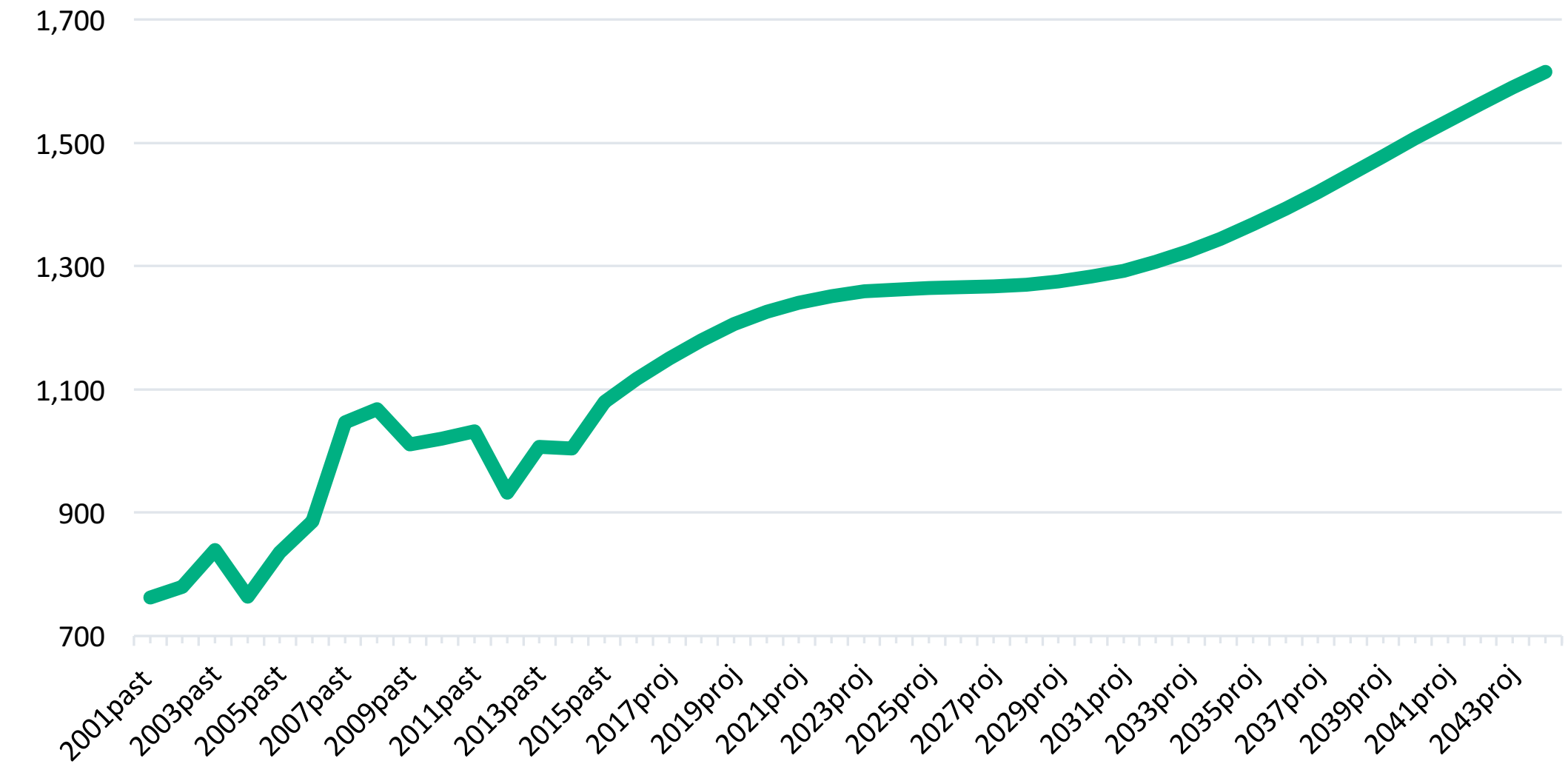


STRATHCONA COUNTY DEMOGRAPHICS AND GROWTH

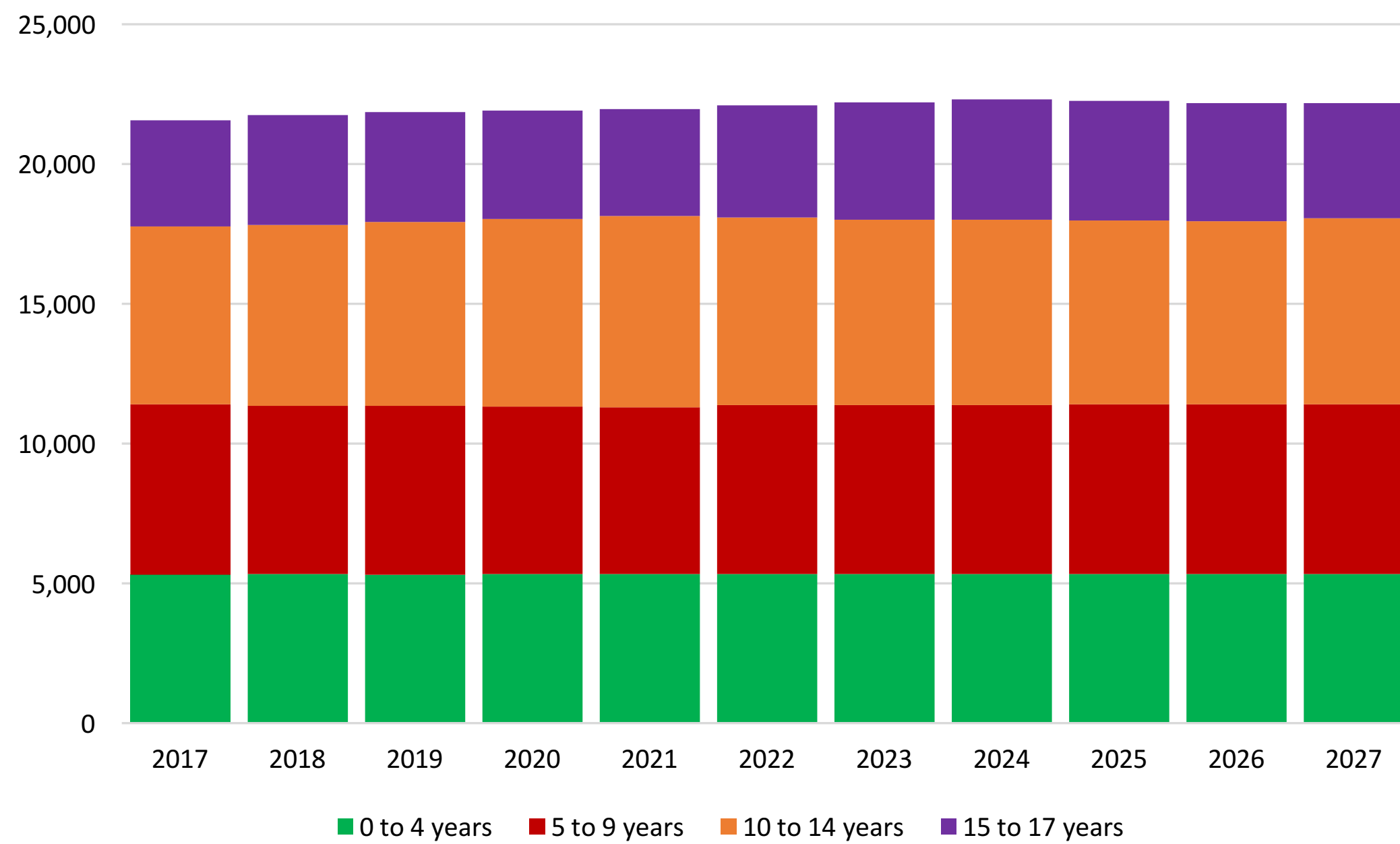
The Capital Region Growth Projections for Strathcona County (2012-2044) versus the Municipal Census Population Counts



Past & Projected Annual Births, Strathcona County (2001-2044)

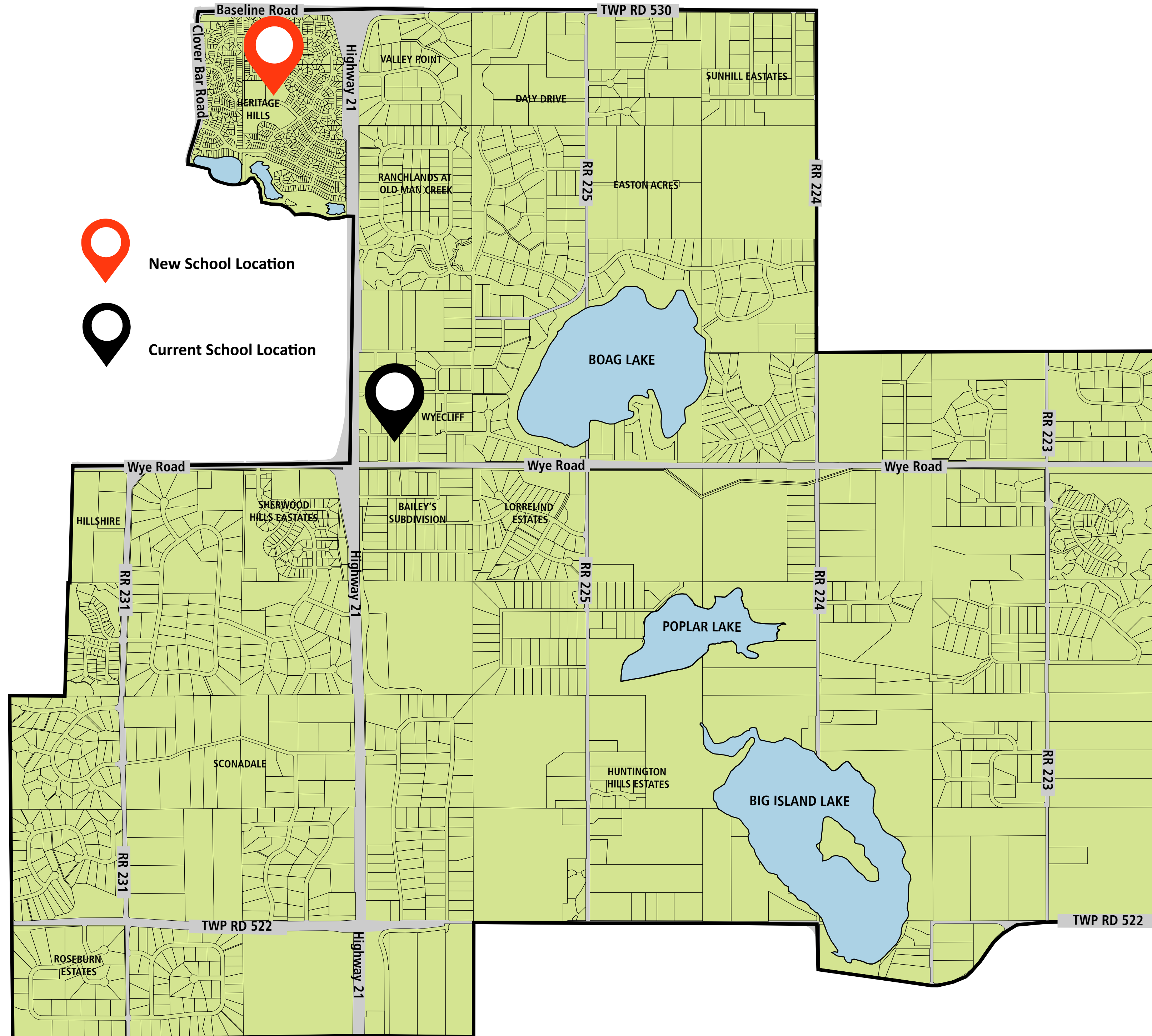


Number of Projected Youth, Strathcona County (2017-2027)



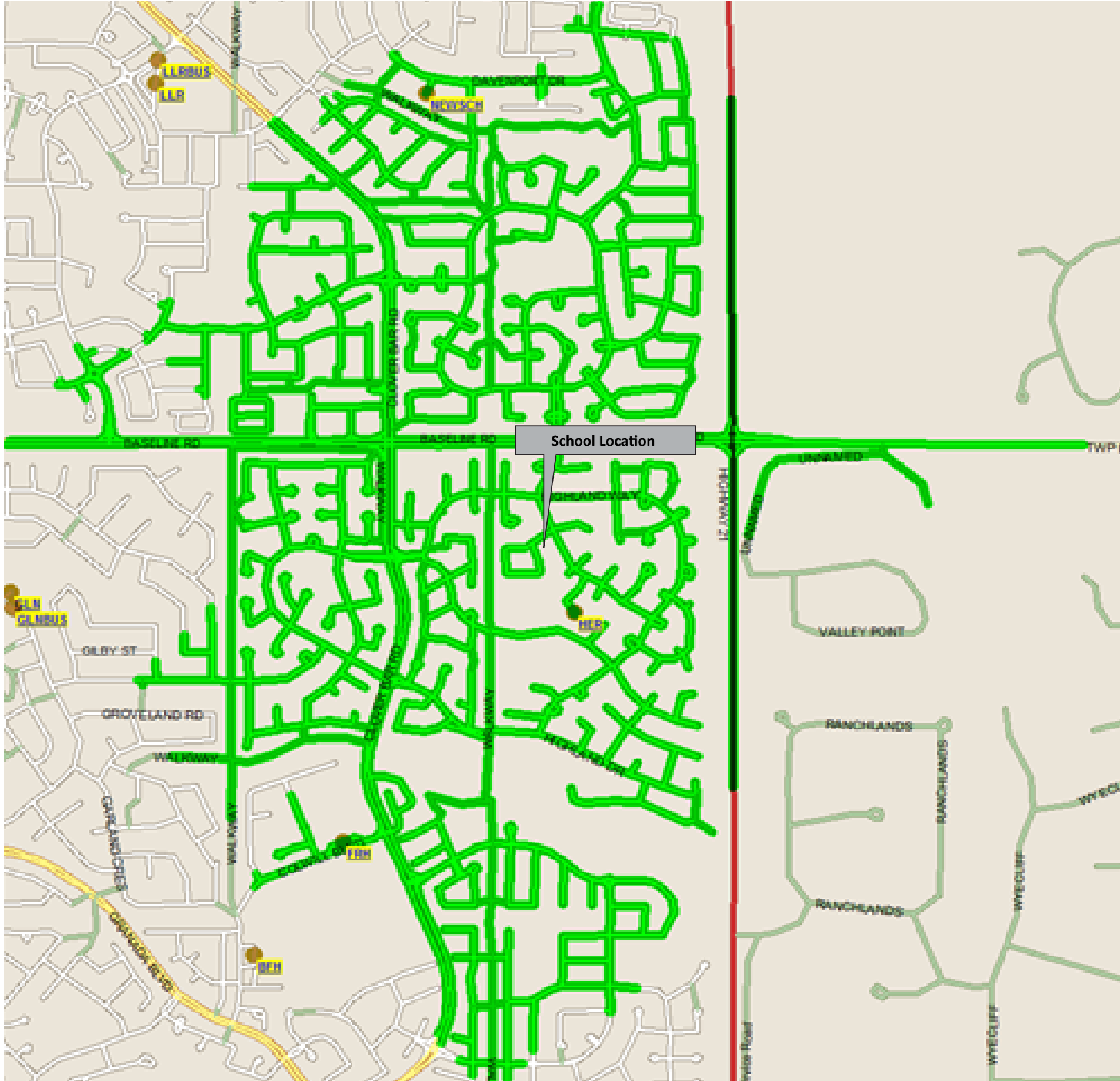
- In 2015, the total population in Strathcona County was 95,597. In 2012 total population was 92,403 people and in 2009, it was 87,998.
- Since 2012, there has been an increase of 3,194 people in Strathcona County, which is a growth of 3.50% over 3 years.
- Between 2015 and 2030 the projected average yearly birth rate is 1,225. Between 2031 and 2044 it is 1,429.
- Municipal censuses from 2012 - 2015 the growth rates for Strathcona County are, on average, between 1.42% and 2.17% per year.
- The youth population is projected to increase 3.13% by 2030

WYE ELEMENTARY ATTENDANCE BOUNDARY



STUDENT TRANSPORTATION

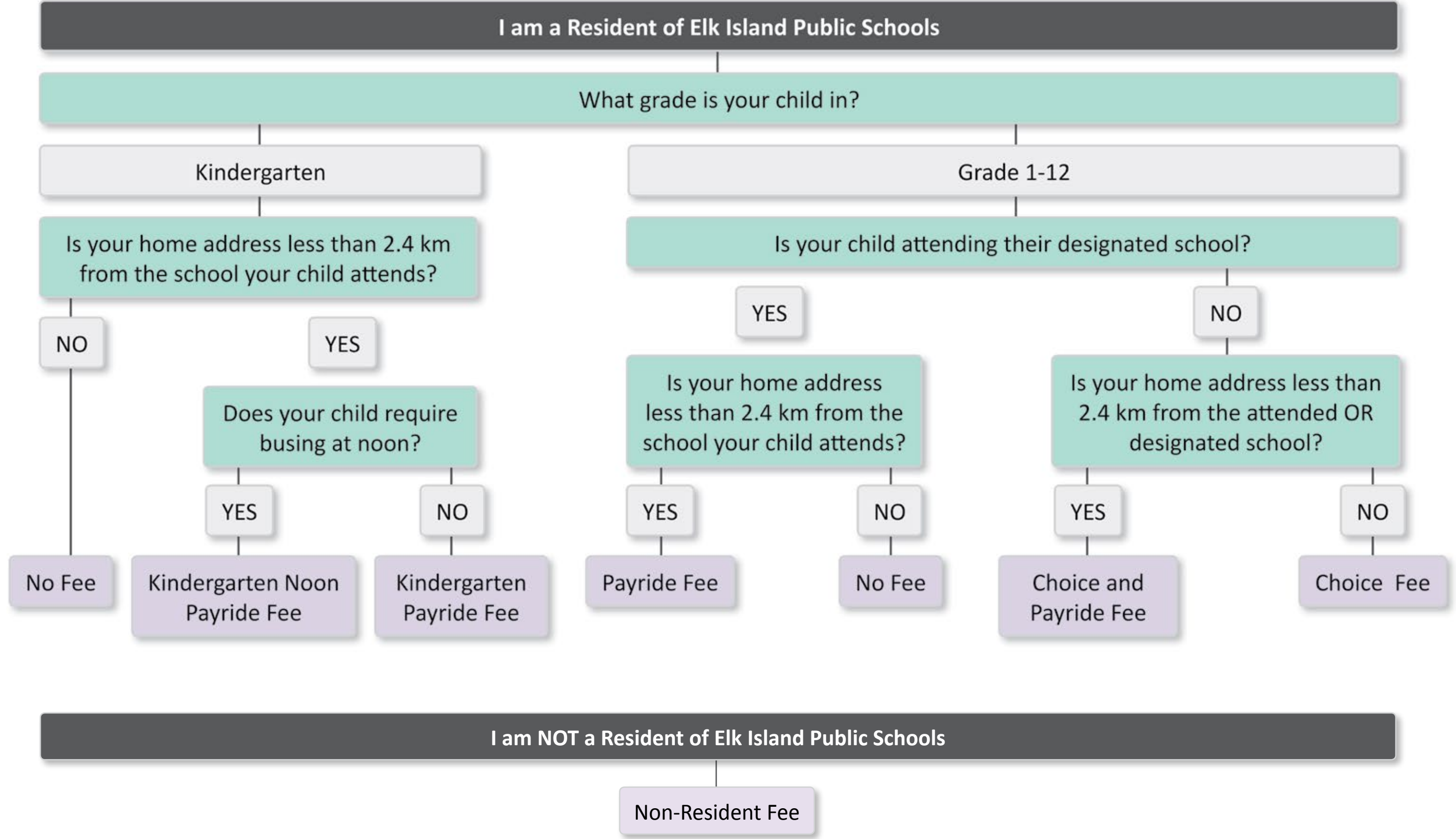
Are you Eligible?



*Students in highlighted area are ineligible for Alberta Education Transportation funding

2017 - 2018 Student Transportation Rates

NOTE: Home-to-School Distance is calculated using a combination of roadways and walkways.



	Eligible Students-Greater than 2.39 km		Ineligible Students-Less than 2.4 km	
	Before June 30	After June 30	Before June 30	After June 30
Designated School	n/a	n/a	\$345.00	\$395.00
Non-Designated	\$390.00	\$440.00	\$735.00	\$835.00
ECS Noon	\$470.00	\$495.00	\$470.00	\$495.00
Non-Resident	n/a	n/a	\$735.00	\$835.00
Family Rate	\$850.00	\$900.00	\$850.00	\$900.00

NOTE: fees are subject to change

All information should be verified with Student Transportation

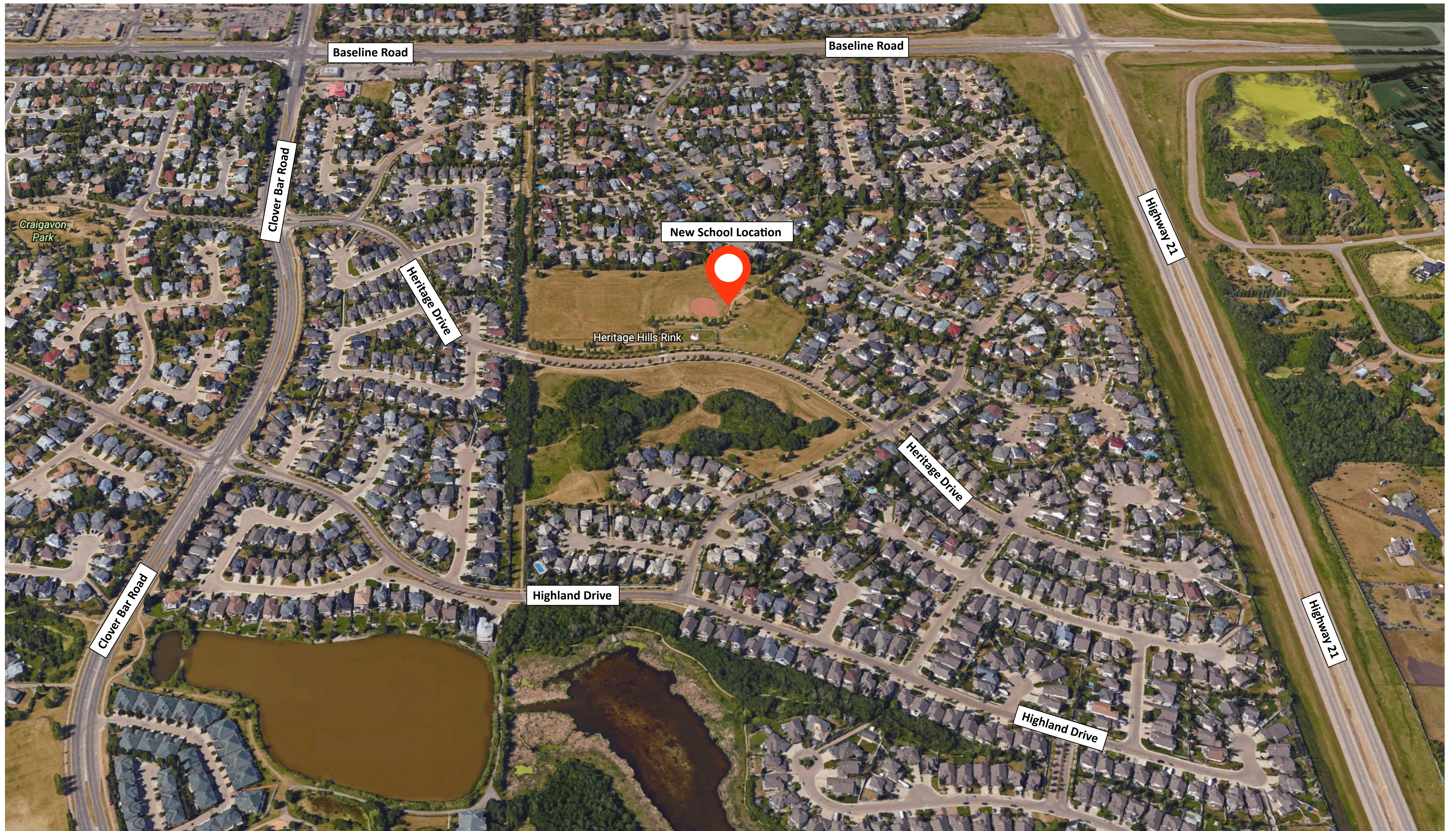
WYE REPLACEMENT SCHOOL K-6 HERITAGE HILLS

PHASE 1
Select Architect
June - July 2017

PHASE 2
Design
July 2017 - April 2018

PHASE 3
Select Builder
May - June 2018

PHASE 4
Construction
July 2018 - Dec. 2019



SUPPORT FOR STUDENTS

Students

- 440 Students
 - ECS: 55
 - Gr. 1-3: 173
 - Gr. 4-6: 212

Staff

- 38 Staff members
 - 11 Classified
 - 27 Certificated

Transitioning

- Starting kindergarten
- Programming for student success
- Providing inclusive learning environments
- Fostering social confidence
- Managing stress and anxiety
- Visiting the new school

